

## SMS unions



### Introduction

SMS union is composed of SMS-13R ROUND NUT, SMS-14 WELD LINER, SMS-15 WELD MALE, and L TYPE SEAL. There are many different parts for SMS UNION such as LONG TYPE (SMS CL TYPE), SHORT TYPE (SMS BE TYPE), and SMS EXPANDING TYPE all can supply what you need.

The materials are offered for food, dairy, beverage, meat processing, pharmaceutical, chemical, and many other industries.

It is necessary you specify at the time when orders be placing if heat numbers and MTR's are required.

Our SMS Unions are normally made by casting, and forged materials are required.

Sanitary SMS Ferrules that CSE offers are made by forged.

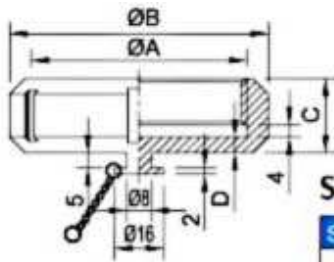
The SMS Ferrules could be conformed with SMS Blank End Cap which is made by solid bar and Clamp as well as other Adapters.

### Specifications:

- \* Materials: 304, 304L and 316L / 1.4301,1.4404
- \* Size : DN25, DN38, DN51, DN63.5, DN76, DN104
- \* Seal : EPDM, SILICON, VITON

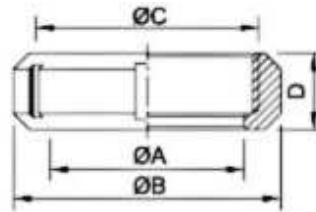
### Order Information:

- \* Minimum Order: Negotiable
- \* FOB: Ningbo or Shanghai



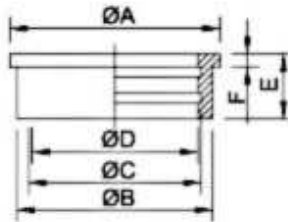
**SMS Blank Nut 13RBN**

SIZE	A	B	C	D
25	RD40x1/6	51	19	4
32	RD48x1/6	60	22	4
38	RD60x1/6	74	23	4
51	RD70x1/6	84	24	5
63	RD85x1/6	100	28	5
76	RD98x1/6	114	30	6
104	RD125x1/4	138	31	5



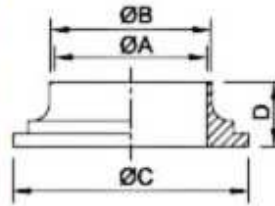
**SMS Nut 6 Slots SMS-13R**

SIZE	A	B	C	D
25	32.3	51	RD40x1/6	19
32	40.3	60	RD48x1/6	22
38	48.5	74	RD60x1/6	23
51	61.0	84	RD70x1/6	24
63.5	74.0	100	RD85x1/6	28
76	87.0	114	RD98x1/6	30
101.6	113.0	138	RD125x1/4	31
104	113.0	138	RD125x1/4	31
104-B	117.0	150	RD132x1/6	31



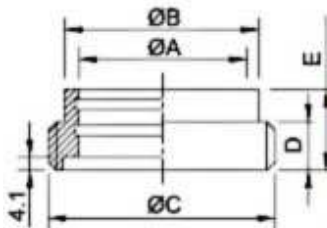
**SMS Expanding Liner 14R**

SIZE	A	B	C	D	E	F
25	35.5	32.0	25.8	25.2	17	3.5
32	43.5	40.0	33.0	32.2	17	3.5
38	55.0	47.9	38.8	38.2	20	4.0
40	55.0	48.0	41.2	40.2	20	4.0
51	65.0	60.4	51.8	51.2	20	4.0
63	80.0	73.5	64.3	63.7	25	4.0
76	93.0	86.5	77.0	76.2	30	5.0
101.6	118.0	112.5	102.6	101.8	27	6.0
104	118.0	112.5	105.0	104.2	27	6.0



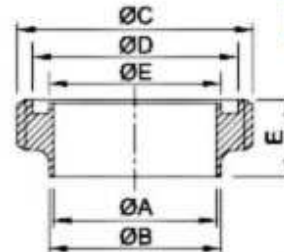
**Long Welding Liner SMS-14**

SIZE	A	B	C	D
25	22.5	25	35.5	15.5
38	35.5	38	55	16.0
51	48.5	51	65	17.0
63	60.5	63.5	80	17.0
76	72.9	76.1	93	19.0
101.6	97.6	101.6	118	19.0
104	100	104	118	19.0
104-B	98.5	102.5	127	19.0



**SMS Expanding Male 15R**

SIZE	A	B	C	D	E
25	25.2	32.0	RD40x1/6	11	20
32	32.2	40.0	RD48x1/6	13	20
38	38.2	47.9	RD60x1/6	15	23
40	40.2	48.0	RD60x1/6	15	23
51	51.2	60.4	RD70x1/6	15	25
63	63.7	73.5	RD85x1/6	19	30
76	76.2	86.5	RD98x1/6	19	35
101.6	101.8	112.5	RD125x1/4	20	30
104	104.2	112.5	RD125x1/4	20	30

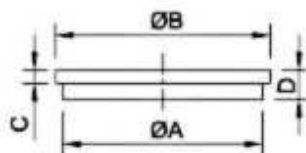


**Lone Welding Male SMS-15**

SIZE	A	B	C	D	E	F
DN25	22.5	25.0	RD40x1/6	32	24.9	19
DN38	35.5	38.0	RD60x1/6	84	37.9	23
DN51	48.5	51.0	RD70x1/6	61	50.9	23
DN63.5	60.5	63.5	RD85x1/6	73.5	63.4	27
DN76	72.9	76.1	RD98x1/6	86	75.9	27
DN101.6	97.6	101.6	RD125x1/4	116	103.9	30
DN104	100.0	104.0	RD125x1/4	116	103.9	30

**SMS Blanks**

SIZE	A	B	C	D
25	32.0	35.5	3.5	7.5
38	48.0	55.0	5.0	9.0
51	60.0	65.0	5.0	10.0
63	73.5	80.0	5.0	10.0
76	86.0	93.0	5.0	11.0
101.6	112.0	118.0	6.0	11.0
104	112.0	118.0	6.0	11.0



**Seal Ring L Type  
(EPDM, SILICON, VITON)**

SIZE	A	B	C
25	22.8	25.1	31.8
38	35.8	38.1	47.8
51	48.8	51.1	60.8
63.5	61.0	63.6	73.3
76	73.4	76.1	85.8
104	100.5	104.0	115.7

