

## ISO Ferrule



### Introduction

The materials is offered for food, dairy, beverage, meat processing, vacuum processing, pharmaceutical, chemical, and many other industries. It is necessary you specify at the time when orders be placing if heat numbers and MTR's are required.

Sanitary ISO Ferrules that Zhengyu offers are made by forged. The ISO Ferrules could be conformed to ISO Blank End Cap which is made by solid bar, Clamp and other Adapters.

### Specifications:

\* Material grade: 304 304L 316L

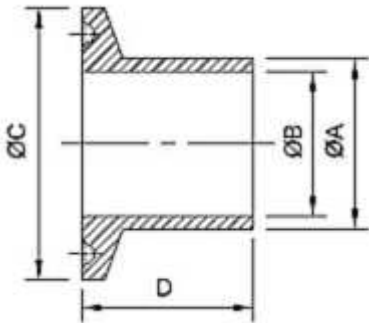
\* Size range: DN8, DN12, DN15, DN20, DN32, DN40, DN50, DN65, DN80, DN100, DN125, DN150, DN200

### Order Information:

\* Minimum Order: Negotiable

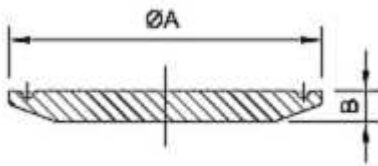
\* FOB: Ningbo or Shanghai

## ISO Ferrule



DN	A	B	C	D
8	13.5	10.3	34.0	28.6
12	17.5	14.0	34.0	28.6
15	21.6	18.1	34.0	28.6
20	26.9	23.7	50.5	28.6
25	33.7	30.5	50.5	28.6
32	42.4	39.2	50.5	28.6
40	48.3	45.1	64.0	28.6
50	60.3	56.3	77.5	28.6
65	76.1	72.1	91.0	28.6
80	88.9	84.9	106.0	28.6
100	114.3	109.1	130.0	28.6
125	139.7	133.7	155.0	28.6
150	168.3	162.3	183.0	28.6
200	219.1	211.1	233.5	28.6

## ISO-16AMP



SIZE	A	B
DN20	50.5	6.3
DN25	50.5	6.3
DN32	50.5	6.3
DN40	64.0	6.3
DN50	77.5	6.3
DN65	91	6.3
DN80	106	6.3
DN100	130	7.9
DN125	155	7.9
DN125	183	11.1
DN200	233.5	11.1