

3A unions



Introduction

3A union is composed of 3A-13H HEX. NUT, 3A-14PRF WELD LINER, 3A-15TRF WELD MALE.

Zhengyu offers a wide variety of clamp fittings in 304 and 316L material in sizes from 1/2" to 12". The materials are offered for food, dairy, beverage, meat processing, vacuum processing, pharmaceutical, chemical, and many other industries. Our products have earned the 3A symbol, which requires an annual assessment to make certain each product conforms in all respects to the published standard. It is necessary you specify at the time of order heat numbers and MTR's are required. Material Test Reports (MTR's) are available to document all heat number.

Sanitary 3A Ferrules that CSE offers are made by forged. Service Short Weld Ferrules- 14WMP, Middle Weld Ferrules- 14MMP Long weld ferrules- 14AMP (L14AM7), Roll- On Expanding Ferrules- 14RMP, Tank Weld Ferrules (light duty) - 14WLMP, Tank Weld Ferrules (heavy duty) - 14MPW, Tygon Hose Adapters- 14MPHT, Rubber Hose Adapters- 14MPHR

All of our 3A Ferrules could be conformed with 3A-16AMP Blank End Cap which is made by solid bar, 3A- Clamp and Seal 13PG, 13FG as well as other Adapters.

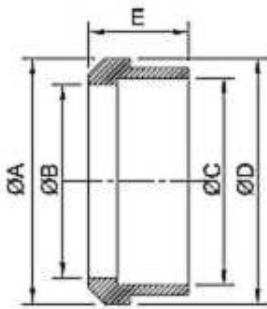
Specifications:

* Materials: 304, 304L, 316L

* Size range:

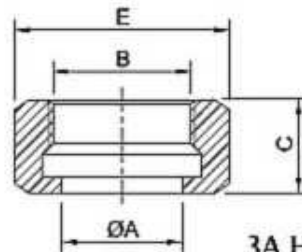
- 3A Unions and Adapters: 1/2", 3/4", 1", 1.5", 2", 2.5", 3" and 4".

- 3A Ferrules: from 1/2" up to 12".



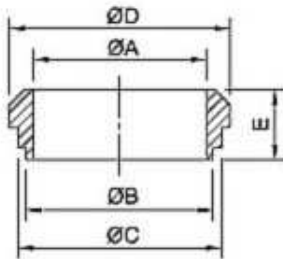
3A Recessless Liner

SIZE	ØA	ØD	ØC	ØB	E
1.0"	33.3	29.5	25.5	22.2	19.1
1.5"	46.8	42.6	38.2	34.9	22.2
2.0"	60.3	55.7	50.9	47.6	24.6
2.5"	73.8	68.8	63.6	60.3	27
3.0"	87.3	81.9	76.3	73	28.6
4.0"	114.3	108.1	101.7	97.6	31.8



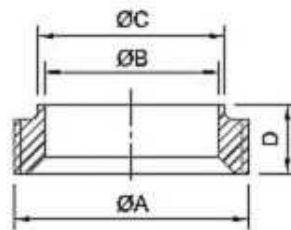
3A Hexagonal Nut 3A-13H

SIZE	ØA	B	C	E
1.0"	30.3	38.02 ACME 8TPI	23	46
1.5"	43.4	51.54 ACME 8TPI	24.6	61.1
2.0"	56.5	65.05 ACME 8TPI	27	76.2
2.5"	69.6	78.56 ACME 8TPI	29.6	91.3
3.0"	82.7	92.08 ACME 8TPI	32.5	106.4
4.0"	108.9	120.14 ACME 6TPI	38.1	137.6



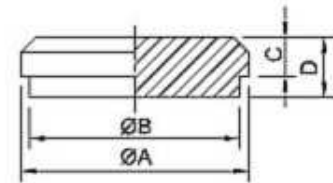
3A Short Bevel Seat Weld Liner 3A-14PRF

SIZE	A	B	C	D	E
1.0"	22.1	25.4	29.5	33.3	18.3
1.5"	34.8	38.1	42.6	46.8	18.3
2.0"	47.5	50.8	55.7	60.3	19.1
2.5"	60.2	63.5	68.8	73.8	22.3
3.0"	72.9	76.2	81.9	87.3	23.1
4.0"	97.6	101.6	108.1	114.3	26.2



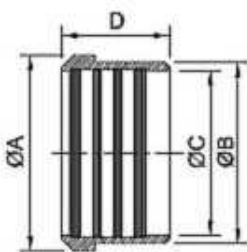
3A Short Bevel Seat Weld Male 3A-15TRF

SIZE	A	B	C	D
1.0"	37.13 ACME 8TPI	22.1	25.4	18.3
1.5"	50.65 ACME 8TPI	34.8	38.1	18.3
2.0"	64.17 ACME 8TPI	47.5	50.8	19.1
2.5"	77.67 ACME 8TPI	60.2	63.5	22.2
3.0"	91.19 ACME 8TPI	72.9	76.2	23.1
4.0"	119.25 ACME 6TPI	97.6	101.6	26.2



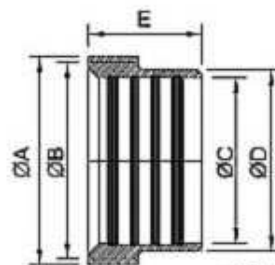
3A -16A

SIZE	A	B	C	D
1.0"	33.3	29.5	7.9	11.9
1.5"	46.8	42.6	8.7	14.3
2.0"	60.3	55.7	10.3	15.9
2.5"	73.8	68.8	11.1	16.7
3.0"	87.3	81.9	11.9	18.3
4.0"	114.3	108.1	14.3	20.6



3A Recessless Liner

SIZE	ØA	ØD	ØC	D
1.0"	33.3	29.5	25.5	19.1
1.5"	46.8	42.6	38.2	28.6
2.0"	60.3	55.7	50.9	33.3
2.5"	73.8	68.8	63.6	34.9
3.0"	87.3	81.9	76.3	36.5
4.0"	114.3	108.1	101.7	38.1



3A Recessless Male

SIZE	ØA	ØB	ØD	ØC	E
1.0"	37.13 ACME 8TPI	33.45	29.5	25.5	20.6
1.5"	50.65 ACME 8TPI	46.96	42.6	38.2	28.6
2.0"	64.17 ACME 8TPI	60.48	55.7	50.9	34.9
2.5"	77.67 ACME 8TPI	73.99	68.8	63.6	38.1
3.0"	91.19 ACME 8TPI	87.5	81.9	76.3	41.3
4.0"	119.25 ACME 6TPI	114.53	108.1	101.7	41.3